

CIRCULAR BREAKING SAW

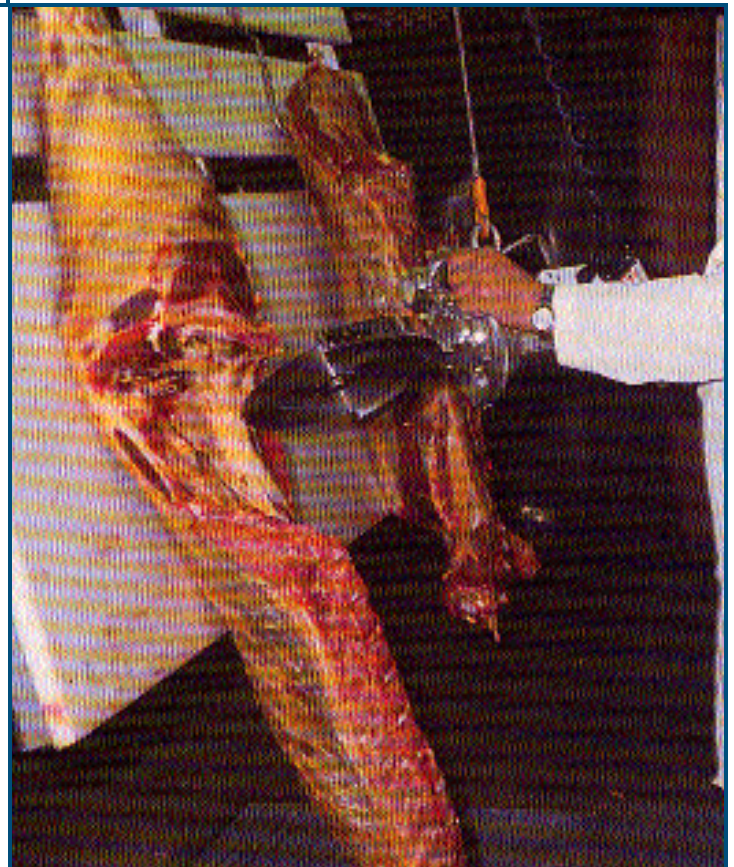
Model SEC 230



**The Jarvis Model SEC 230 -
electrically powered circular breaking saw.**

JARVIS

- The SEC 230, with a 3 inch (76 mm) depth of cut, is ideally suited for:
 - Beef: cutting chucks, shoulders, ribs, forequarters, hindquarters, chine bones, briskets and loins.
- Sealed, 1.9 hp electric motor for ultimate performance.
- Short overall length and specially designed handles for easy handling.
- Features electric or mechanical braking.
- Smooth surface construction for easy cleaning and optimum hygiene.
- Anti-tie down controls for operator safety.
- Meets national and international requirements for hygiene and safety.



SMOOTH - POWERFUL - RUGGED

CIRCULAR BREAKING SAW

Model SEC 230

Specifications

| | | |
|-------------------------|---|---------|
| Drive | Electric | |
| Model SEC 230 | | |
| Motor Power | 1.9 hp | 1400 W |
| Operating Voltage | 230 / 460 V, 3 phase, 60 Hz other voltages and 50 Hz available | |
| Blade Speed | | |
| 50 Hz | 1350 rpm | |
| 60 Hz | 1650 rpm | |
| Control Handles | Electric Dual Anti-tie Down or One Trigger (CE) | |
| Brake | Electric (DC) or Mechanical | |
| Blade Diameter | 9.1 in | 230 mm |
| Cutting Depth (maximum) | 3.0 in | 75 mm |
| Overall Length | 24 in | 610 mm |
| Weight | 40 lbs | 18.1 kg |

Equipment Selection and Accessories

Order Number

| | |
|---|---------|
| Model Sec 230 | |
| 230 V, 3 phase, 60 Hz* single trigger with mechanical brake | 4004142 |
| 380 V, 3 phase, 50 Hz* dual triggers with electric brake | 4004033 |
| 380 V, 3 phase, 50 Hz* single trigger with mechanical brake | 4004150 |
| 460 V, 3 phase, 60Hz* dual triggers with electric brake | 4004036 |
| 460 V, 3 phase, 60 Hz* single trigger with mechanical brake | 4004143 |

| | | |
|---|---|--|
| Blades | <i>Please specify blade preference when ordering.</i> | |
| ∅ 9.1 in / 230 mm - 130 teeth | 1023286 | |
| ∅ 9.1 in / 230 mm Skip Tooth - 72 teeth | 1023387 | |
| ∅ 9.1 in / 230 mm, Noise Reduction - random teeth | 1023299 | |
| ∅ 9.1 in / 230 mm, Noise Reduction - 60 teeth | 1023348 | |

| | |
|----------|---------|
| Balancer | 4042035 |
|----------|---------|

* Other configurations available: please specify voltage, hertz and blade preference when ordering.

Products for the meat and poultry industry

Jarvis Products Corporation · 33 Anderson Road · Middletown, CT 06457-4926 · United States of America
Telephone (860) 347-7271 · Fax (860) 347-9905 · jarvis.products.corp@snet.net