

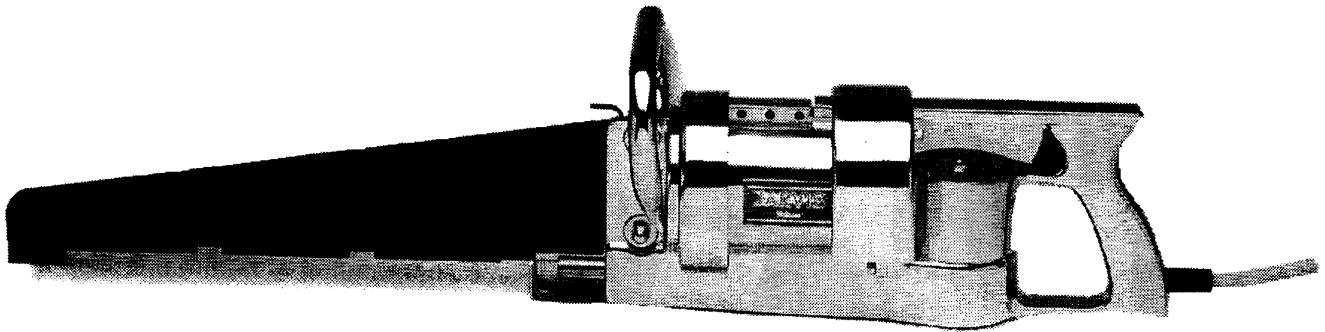
NOT FOR HOME USE

Owner's Manual For:

# JARVIS Wellsaw

## PORTABLE POWER SAW MODEL 444

| Table Of Contents:                                      | Page |
|---|------|
| •Notice to Employer and Safety Director                 | 2    |
| •Notice to Operators, Maintenance and Cleanup Personnel | 3    |
| •Parts Diagram  | 4    |
| •Parts List   | 6    |
| •Specifications   | 7    |
| •Installation Instructions                              | 7    |
| •General Safety Instructions                            | 9    |
| •Operation Instructions                                 | 10   |
| •Maintenance Instructions                               | 11   |



**JARVIS**®

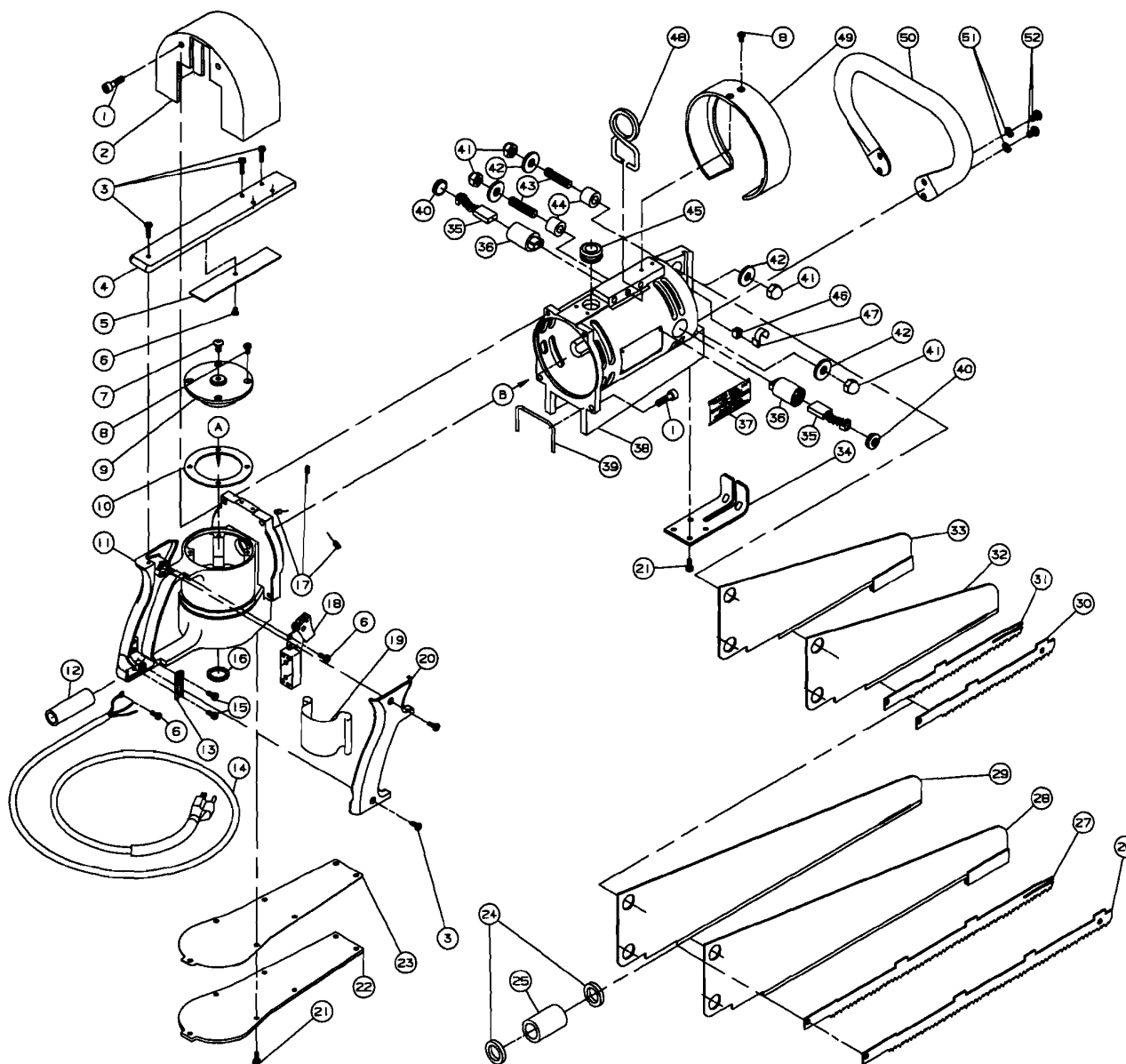
6205004.

**PRODUCTS CORPORATION**

33 ANDERSON ROAD, MIDDLETOWN, CONNECTICUT 06457-4926

UNITED STATES OF AMERICA

FAX 860-347-6978 TEL 860-347-7271



# JARVIS<sup>®</sup>

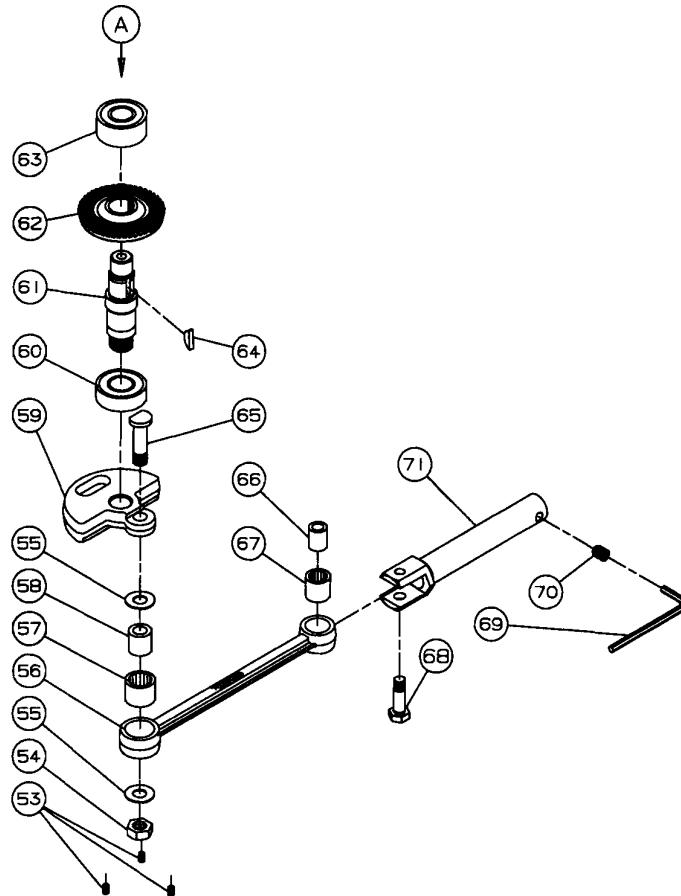
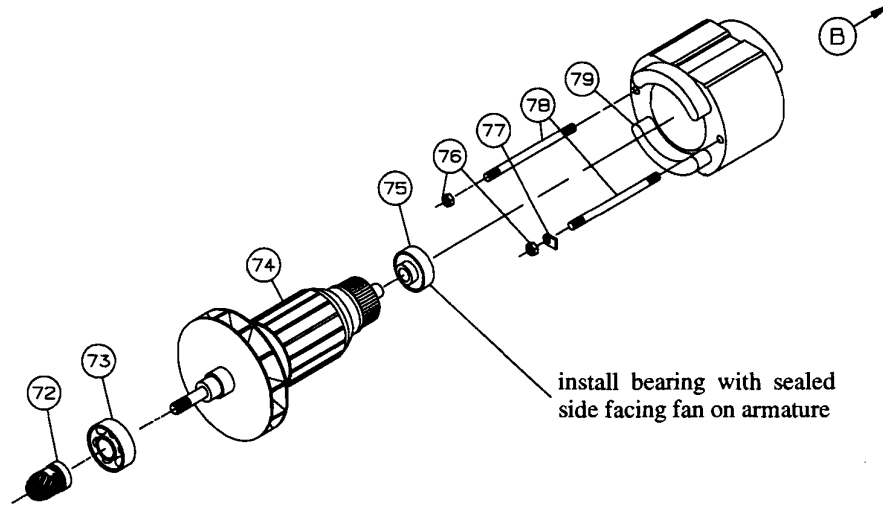
6205004.

## PRODUCTS CORPORATION

33 ANDERSON ROAD, MIDDLETOWN, CONNECTICUT 06457-4926

UNITED STATES OF AMERICA

FAX 860-347-6978 TEL 860-347-7271



**JARVIS**®

8205004;

**PRODUCTS CORPORATION**

33 ANDERSON ROAD, MIDDLETOWN, CONNECTICUT 06457-4926

UNITED STATES OF AMERICA

FAX 860-347-6978 TEL 860-347-7271

| ITEM | PART NO. | PART NAME                   | QTY |
|------|----------|-----------------------------|-----|
| 1    | 1055437  | Socket Head Cap Screw       | 4   |
| 2    | 1024095  | Guard                       | 1   |
| 3    | 1055439  | Oval Head Screw             | 7   |
| 4    | 1061188  | Tie Bar                     | 1   |
| 5    | 1002198  | Cover Plate                 | 1   |
| 6    | 1055454  | Round Head Screw            | 4   |
|      | 1055438  | Set of 12 Screws            |     |
| 7    | 1055434  | Button Head Screw           | 1   |
| 8    | 1055431  | Oval Head Screw             | 6   |
| 9    | 1002194  | Bearing Cap                 | 1   |
| 10   | 1035198  | Gasket                      | 1   |
| 11   | 1016200  | Gear Housing                | 1   |
| 12   | 1063121  | Strain Relief               | 1   |
| 13   | 1012048  | Clamp Bar                   | 1   |
| 14   | 1001028  | Power Cord Set, 115v        | 1   |
|      | 1001029  | Power Cord Set, 230v        | 1   |
|      | 3001016  | European Line Cord          | 1   |
|      | 3063091  | Control Box 42v, includes:  | 1   |
|      | 1001111  | Switch Cord                 | 1   |
|      | 1063537  | Fuse                        | 1   |
|      | 1063601  | Relay                       | 1   |
| 15   | 1055430  | Fillister Head Screw        | 2   |
| 16   | 1035194  | Seal                        | 1   |
| 17   | 1055436  | Set Screw                   | 3   |
| 18   | 1005038  | Switch                      | 1   |
| 19   | 1063124  | Insulator                   | 1   |
| 20   | 1002195  | Handle Cover                | 1   |
| 21   | 1055452  | Flat Head Screw             | 11  |
|      | 1055426  | Set of 12 Screws            |     |
| 22   | 1002196  | Bottom Plate                | 1   |
| 23   | 1035196  | Bottom Plate Gasket         | 1   |
| 24   | 1035195  | Seal                        | 2   |
| 25   | 1036118  | Bushing                     | 1   |
| 34   | 1024060  | Blade Guard                 | 1   |
| 35   | 3063009  | Brush and Spring Assy       | 2   |
| 36   | 1063122  | Brush Holder                | 2   |
| 37   | 1017035  | Information Label, 115v     | 1   |
|      | 1017036  | Information Label, 230v     | 1   |
|      | 1055425  | Label Mounting Screw        | 4   |
| 38   | 1016201  | Motor Housing and Label     | 1   |
| 39   | 1035203  | Gasket                      | 1   |
| 40   | 1002199  | Brush Cap                   | 2   |
| 41   | 1007163  | Cap Nut                     | 4   |
| 42   | 1004150  | Flat Washer                 | 4   |
| 43   | 1027046  | Stud                        | 2   |
| 44   | 1036119  | Insert                      | 2   |
| 45   | 1063123  | Grommet                     | 1   |
| 46   | 1012047  | "U" Clip                    | 1   |
| 47   | 1012046  | "S" Clip                    | 1   |
| 48   | 1001027  | Hanging Ring                | 1   |
| 49   | 1002197  | Shroud                      | 1   |
| 50   | 1019079  | Handle (incls. items 51-52) | 1   |
| 51   | 1004049  | Lock Washer                 | 4   |
| 52   | 1055069  | Button Head Screw           | 4   |
| 53   | 1055100  | Set Screw                   | 3   |
| 54   | 1007165  | Lock Nut                    | 1   |
| 55   | 1004127  | Thrust Bearing Race         | 2   |
| 56   | 1028059  | Connecting Rod              | 1   |
| 57   | 1021221  | Needle Bearing              | 1   |
| 58   | 1021223  | Inner Race                  | 1   |
| 59   | 1061189  | Crank Arm                   | 1   |
| 60   | 1021230  | Ball Bearing                | 1   |

| ITEM | PART NO. | PART NAME                | QTY |
|------|----------|--------------------------|-----|
| 61   | 1020130  | Drive Shaft              | 1   |
| 62   | 1026070  | Spiral Bevel Gear        | 1   |
| 63   | 1021210  | Ball Bearing             | 1   |
| 64   | 1030100  | Woodruff Key             | 1   |
| 65   | 1027044  | Drive Stud               | 1   |
| 66   | 1021222  | Inner Race               | 1   |
| 67   | 1021220  | Needle Bearing           | 1   |
| 68   | 1027045  | Rod Stud                 | 1   |
| 69   | 8030032  | Hex Key                  | 1   |
| 70   | 1055423  | Set Screw                | 1   |
| 71   | 1065026  | Push Rod                 | 1   |
| 72   | 1026071  | Spiral Bevel Pinion Gear | 1   |
| 73   | 1021211  | Ball Bearing             | 1   |
| 74   | 1063603  | Armature, 42v            | 1   |
|      | 1063113  | Armature, 115v           |     |
|      | 1063114  | Armature, 230v           |     |
| 75   | 1021209  | Ball Bearing             | 1   |
| 76   | 1007164  | Lock Nut                 | 2   |
| 77   | 1012049  | Clamp                    | 1   |
| 78   | 1027047  | Stator Stud              | 2   |
| 79   | 1063602  | Stator, 42v              | 1   |
|      | 1063115  | Stator, 115v             |     |
|      | 1063116  | Stator, 230v             |     |

### replacement kits

| ITEM | PART NO. | PART NAME                  | QTY |
|------|----------|----------------------------|-----|
|      | 3016120  | Gear Housing & Seal Assy   | 1   |
|      | 3016121  | Motor Housing & Seal Assy  | 1   |
|      | 3061069  | Drive Shaft Assembly       | 1   |
|      | 3061070  | Crank Arm Assembly         | 1   |
|      | 3028031  | Connecting Rod & Bearing   | 1   |
|      | 3063092  | Armature & Brg. Assy, 42v  | 1   |
|      | 3063005  | Armature & Brg. Assy, 115v | 1   |
|      | 3063006  | Armature & Brg. Assy, 230v | 1   |
|      | 1062003  | Gear Grease, 1 Pound       | 1   |
|      | 1017083  | Danger Label               | 1   |

### blades and blade supports

| ITEM | PART NO. | PART NAME                   | QTY |
|------|----------|-----------------------------|-----|
| 26   | 1023121  | Blade 16", End Cutting      | 1   |
| 27   | 1023124  | Blade 16" 4 tpi, Heavy Duty | 1   |
| 28   | 1058072  | Blade Support 16" Hvy. Duty | 1   |
| 29   | 1058077  | Blade Support 16" End Cut   | 1   |
| 30   | 1023122  | Blade 8", End Cutting       | 1   |
| 31   | 1023123  | Blade 8" 4 tpi, Heavy Duty  | 1   |
| 32   | 1058076  | Blade Support 8" End Cut    | 1   |
| 33   | 1058073  | Blade Support 8" Heavy Duty | 1   |

### assembly tools

| ITEM | PART NO. | PART NAME               | QTY |
|------|----------|-------------------------|-----|
|      | 8039105  | Brush Alignment Bar     | 1   |
|      | 8039106  | "T" Handle Stator Studs | 1   |
|      | 8039107  | "T" Handle Hex Key      | 1   |
|      | 8039108  | Brush Wiring Tool       | 1   |
|      | 8039109  | Brush Alignment Shaft   | 1   |
|      | 8039110  | All Tools Listed Above  | 1   |

# JARVIS®

6205004.

## PRODUCTS CORPORATION

33 ANDERSON ROAD, MIDDLETOWN, CONNECTICUT 06457-4926

UNITED STATES OF AMERICA

FAX 860-347-6978 TEL 860-347-7271

### SPECIFICATIONS

#### Model 444 Wellsaw

|  |  |                       |
|--|--|-----------------------|
| Motor Power                                | 2 hp   | 1491 W                |
| Voltage                                    | 115V, 1 phase, 50/60 Hz<br>230V, 1 phase, 50/60 Hz |                       |
| Full Load Amperes                          | at 115V<br>at 230V<br>at 42V                       | 15 A<br>7.5 A<br>41 A |
| Blade Speed                                | 6300 cycles per minute                             |                       |
| Stroke                                     | 1.5 in   | 38 mm                 |
| Control Handle                             | single trigger                                     | electric              |
| Blade Lengths                              | 8 in<br>16 in                                      | 203 mm<br>406 mm      |
| Overall Length (with 16 in / 400 mm blade) | 38 in  | 965 mm                |
| Weight                                     | 23 lbs   | 10.5 kg               |

### INSTALLATION INSTRUCTIONS

These instructions have been prepared to assure you of satisfactory operation through proper use of your **Jarvis Wellsaw**. *Read them carefully and keep them for future reference.*

#### POWER SUPPLY:

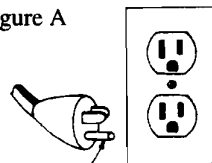
Your **Jarvis Wellsaw** operates on 50 or 60 Hz., single phase alternating current. Its voltage rating is indicated on the name plate (42 volt, 115 volt or 230 volt). If an extension cord is to be used, be sure that the wire size is adequate to maintain full line voltage to the tool. For the 115 and 230 volt tools, be sure that it is a three conductor cord with a three prong grounding-type plug (with the grounding blade intact).

#### GROUNDING: 115 volt and 230 volt tool only.

Your **Jarvis Wellsaw** should be grounded to protect the user from electric shock or **ELECTROCUTION**. The

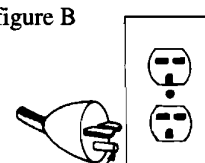
**Jarvis Wellsaw** is equipped with an approved three conductor cord and three-prong grounding-type plug to fit the proper grounding-type receptacle. The green conductor in the cord is the grounding wire. Never connect the green wire to a live terminal. If your **Jarvis Wellsaw** is the 115 volt model, it has a plug that looks like figure "A". If your **Jarvis Wellsaw** is the 230 volt model, it has a plug that looks like figure "B".

figure A



grounding blade

figure B



grounding blade

Do not use any adapters with the **Jarvis Wellsaw**.

#### CONTROL BOX: 42 volt tool only.

Your **Jarvis Wellsaw** must be connected to the electrical control box (3063091) as shown in figure "C".

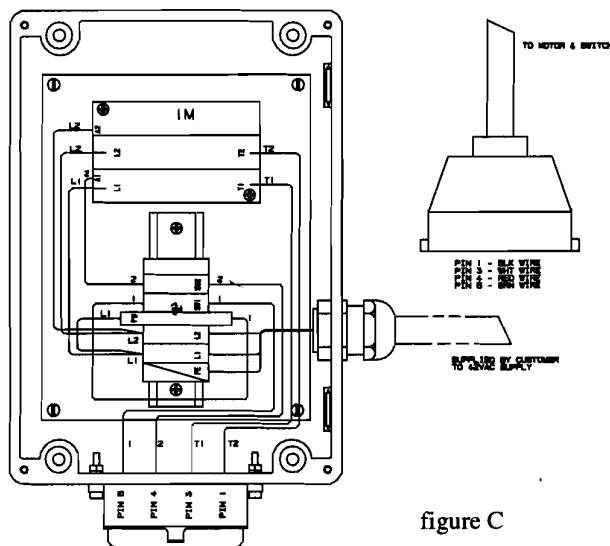


figure C

**JARVIS**®

0205004

#### PRODUCTS CORPORATION

33 ANDERSON ROAD, MIDDLETOWN, CONNECTICUT 06457-4926  
UNITED STATES OF AMERICA  
FAX 860-347-6978 TEL 860-347-7271